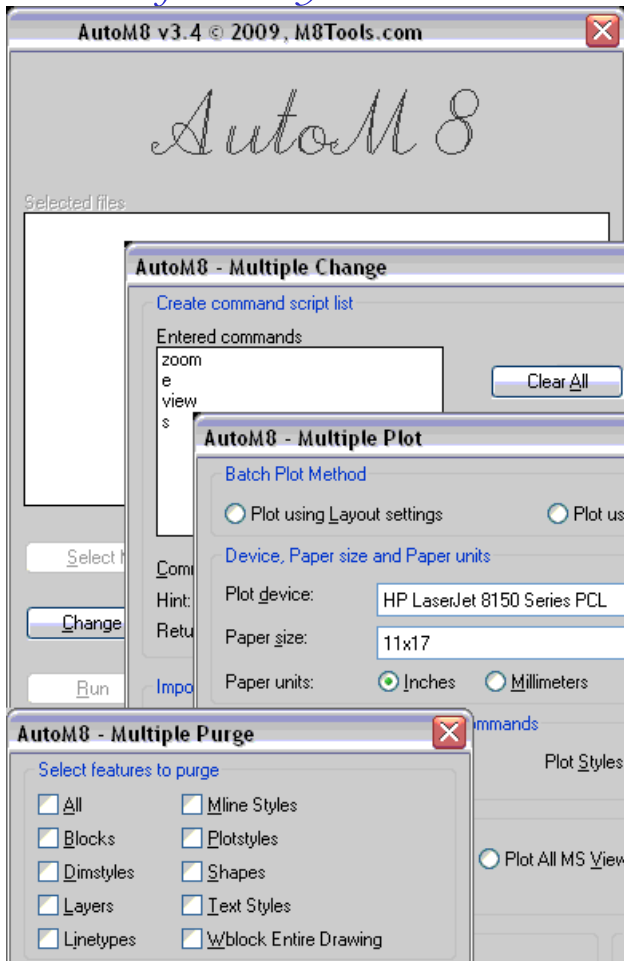

TOOLS CREATED TO MAKE YOUR
JOB EASIER.

BECAUSE YOUR TIME IS
VALUABLE.

Solutions for a busy world



AUTOM8

“Necessity – The Mother of Invention” AutoM8 was truly a product created out of necessity. Many years ago I had a need to plot numerous drawings and AutoCAD didn’t have a way of doing this, so I created an AutoLisp utility to do this. It wasn’t long before the need to make batch changes came along. Then the need to batch purge because at that time I was archiving drawings on floppy disk and the smaller the file size the better.

M8Tools.com founder Craig Gorham

One user wrote us:

I would like to thank you for the help you gave me on the Lisp routine I used with AutoM8. It was immensely helpful to be able to change the 600 drawings in the package in less than 70 minutes. The AutoM8 program has really helped me with the task that I am required to do to finalize our drawings for our customers.

*Mike Rivetti
Alstom Power Conversion*

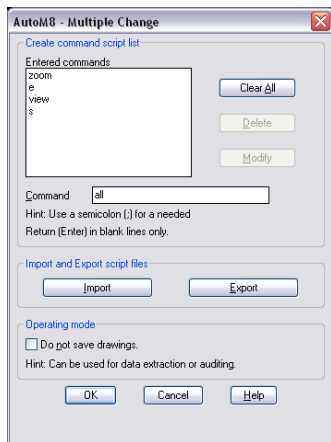
AutoM8 lets you select multiple drawings from any folder and batch process them with Change, Plot or Purge. You can sort and rearrange the order in which files are batch processed. Export or Import your file selections. Batch plot using printer/plotter assigned to the layout(s) or batch plot using manual settings and control the plotted output to the sheet size, pen settings, scale and any other plot setting you need and have all the output appear as desired. You can sent plot output to either a printer/plotter, drawing folder, designated plot file folder or pick a folder on the fly. AutoM8 is regularly updated and many of the features have been added from user feedback.



Main Dialog Box

The main AutoM8 dialog box gives you the choice of the three primary options: **Change**, **Plot**, or

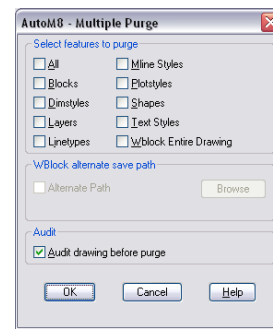
Purge, along with Config, Help, Info, Select More Files and Save Selections options.



Change Dialog Box

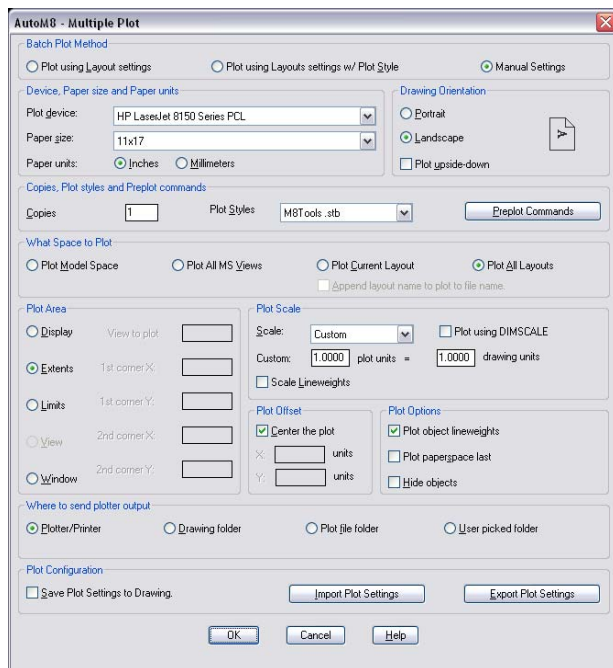
Change – Enter AutoCAD commands to form a script or load a saved command script that will be applied to the selected drawings. The commands can also be exported for later use. Once the command script is generated pick OK, you will then be able to select and organize the drawing files you want to change.

following: plotter, paper size, paper units, drawing orientation, to plot upside-down, number of copies, plot style, enter preplot commands (similar to the Change option), plot the model space tab, all model space views, current paper space tab or all the paper space tabs (layouts), area to plot, plot scale, plot offset or centered, plot options of lineweights, plot paper space last, and hide objects, plot to a printer/plotter or to a file. You have the option to save these settings to the layout and save the drawing. Import and export plot settings. Once plot settings are set pick OK, you will then be able to select and organize the drawing files you want to plot.



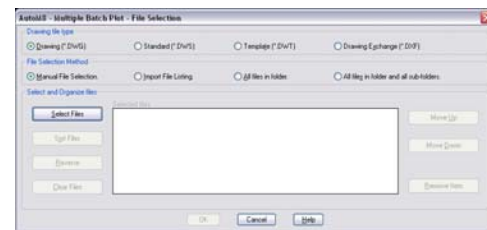
Purge Dialog Box

Purge – Select the type of purging you want to do, be it any unused: Blocks, Dimstyles, Layers, Linetypes, Mline styles, Plotstyles, Shapes, Text styles, or All of the previously mentioned items. Or you can WBlock the entire drawing. Once you have set up the selection pick OK, you will then be able to select and organize the drawing files you want to purge.



Plot Dialog Box

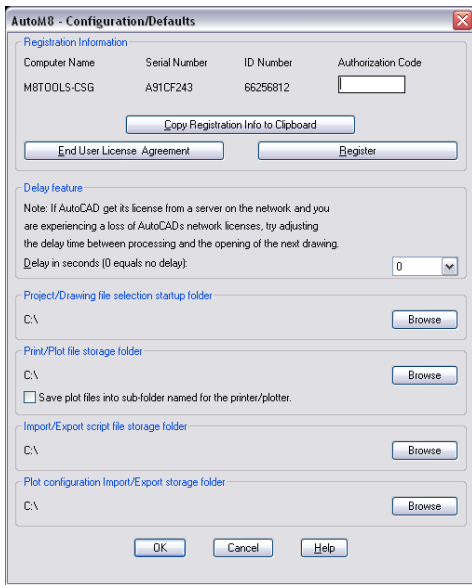
Plot – There are two ways to batch plot, use the printer/plotter assigned to the layout or manually define the plotter settings with setting any of the



File Selection Dialog Box

File Selection – After selecting and setting up the batch process method, you will then be able to select drawing files. Once files are selected you can add or

remove, sort and reverse order. By picking OK you will be taken back to the main dialog where the selected files will be listed. You can then pick more files, setup another batch or run the current batch.



Config Dialog Box

Config – Many of the default settings used by AutoM8 can be set in the config dialog. If you choose to register the software, then you would enter the authorization code here. There is also a button for registration and license agreement. There is an option to insert a delay into the batch processing. Setup your startup folders for: project and/or drawing files, plot files, command scripts and plot configuration.

SYSTEM REQUIREMENTS

Windows 2000, Windows XP Windows Vista or Windows 7. AutoCAD versions 2000 through 2010. AutoCAD vertical applications are also supported (Architectural Desktop, Land Development Desktop, Mechanical Desktop, etc.).

AutoCAD LT versions are **NOT** Supported.

AVAILABILITY

Download a 31 day fully functional demo or purchase a license at:

<http://www.m8tools.com/autom8.htm>

LICENSING INFORMATION

AutoM8 is distributed as shareware and requires the use of an authorization code after the demo period expires. Each authorization code is unique to the computer AutoM8 is installed on.

Pricing for licenses is as follows:

1st seat license is U.S. \$35.00.

2nd seat through 10th seat are an additional U.S. \$25.00 each.

11 or more seats are an additional U.S. \$15.00 each.

Site Licenses are available for sites or enterprises requiring more than 15 seats. Site Licenses do not require authorization codes; instead they are branded with the number of seats licensed and the name of the company licensing AutoM8.

Contact M8Tools.com for pricing at (859) 619-1365 or email us at:

sales@m8tools.com



*Tools created to make your job easier.
Because these are AutoCAD tools you can use.*

www.m8tools.com

240 Boone Avenue
Winchester, KY 40391

AutoM8 © 2009, M8Tools.com